

# Verney Road School Shepparton

## Design Engagement Report

January 2023



Artist impression only, subject to change

# The Victorian Government is creating a new home for Verney Road School

The Victorian Government has committed almost \$25 million to modernise the former Wanganui Park Secondary College to create a new home for Verney Road School in Shepparton.

In the 2022–23 State Budget, the school received at least \$23.782 million. In the 2021-22 State Budget, this project received \$1 million for planning.

The new campus will be ready by 2026. It will provide students with more space and better learning opportunities.

## About the engagement

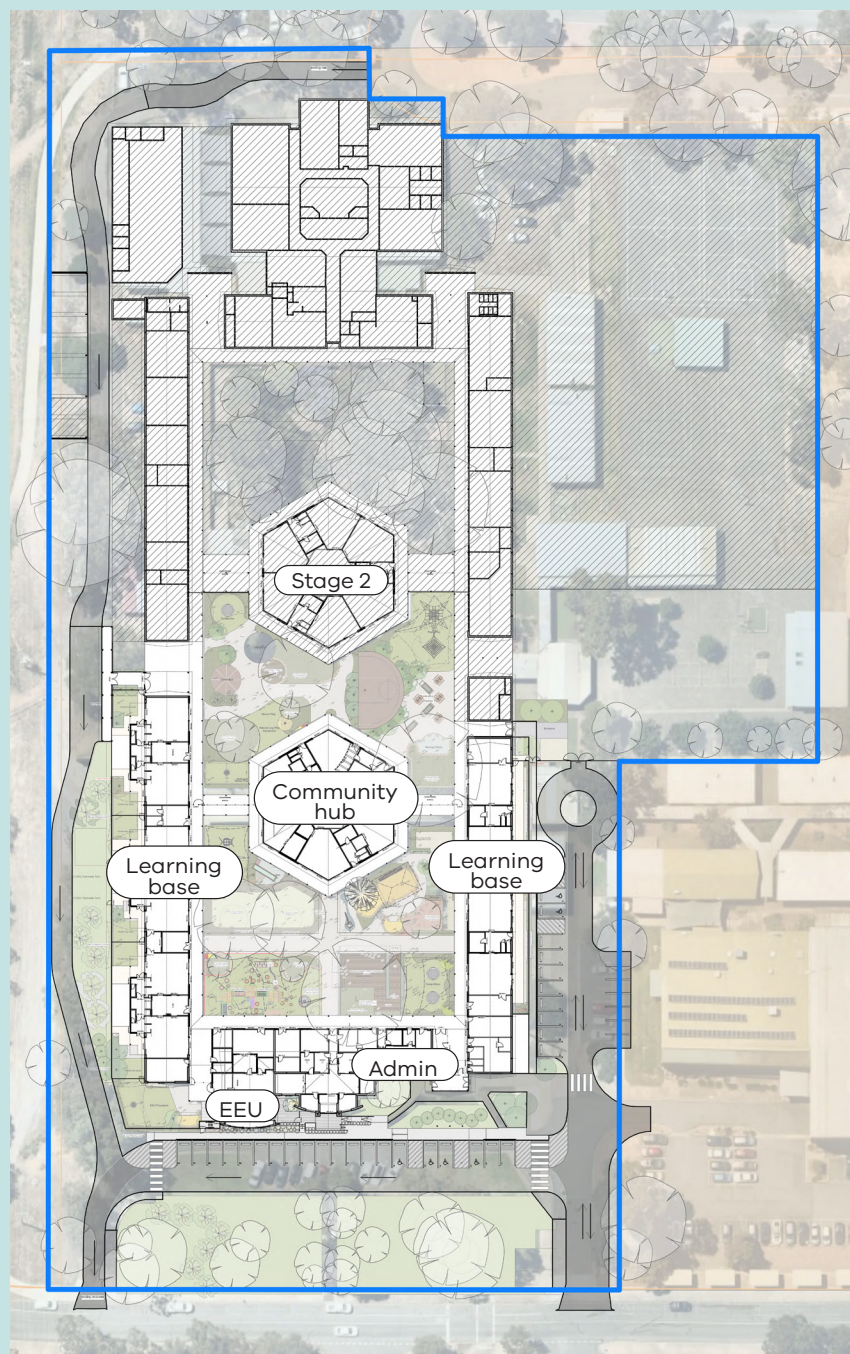
In November 2022, we sought feedback on the school's design at an information session held at Verney Road School.

Our senior project officer and the project architect from Perkins Architects presented concept designs to a group of 16 teachers, parents and grandparents from Verney Road School for their feedback.

Our goal is to help Verney Road School prepare its students to thrive in the 21st century. We want to ensure it is a welcoming and safe place for its students and the school community.

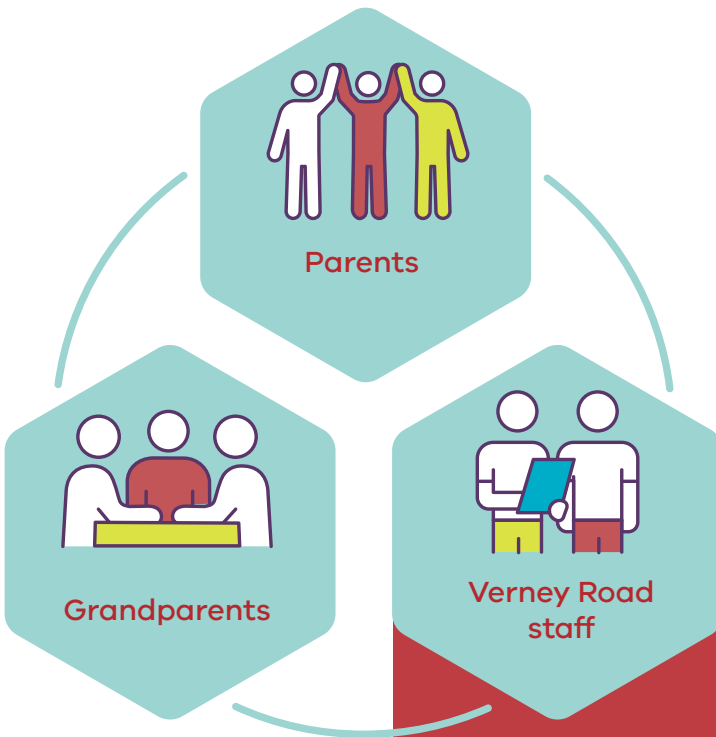
This session was an important opportunity for family and staff to have a say in the design features of Verney Road School's new home on the site of the former Wanganui Park Secondary College.

This report summarises what we heard during the session.



Verney Road School  
Indicative site map

## Engagement snapshot



### What we shared

The architect shared an initial floor plan and early design ideas for the new Verney Road School.

Our goal is to create a fit-for-purpose school that will meet needs and enhance learning outcomes for current and future students.

The features under consideration for the new, modern home of Verney Road School include:

- spacious classrooms
- private toilet facilities shared between 2 classrooms
- outdoor garden spaces shared between 2 classrooms
- parent meeting hubs
- streamlined traffic
- ample car parking
- undercover access between buildings
- shade around buildings and classrooms
- a welcoming foyer and entrance area
- meeting rooms and breakout spaces
- an accessible and centralised library
- quiet spaces for students
- acoustic engineering
- modern ventilation and airflow
- a multi-purpose room with hoists and accessible supports.

## What we heard

### Participants liked design features including the:

- sensory equipment
- parent hubs
- hoists and frames in the multi-purpose room
- pod spaces/quiet spaces in classrooms
- support yards/outdoor spaces for each classroom
- toilets shared between each pair of classrooms
- larger toilet facilities
- fitness spaces
- library spaces
- wellbeing hub with clear lines of sight.



### Participants told us they valued:

- outdoor 'nature' play areas
- equipment using natural materials such as logs and frames
- quiet/calming outdoor spaces
- bike trails
- ball play zones
- ground-height trampolines
- sand and water play areas
- a decked area
- spaces for dress-ups and small performances
- cultural input into garden and outdoor design from local Indigenous groups
- outdoor music equipment such as percussion drums and xylophones created with natural materials
- outdoor music and performance spaces with access to the adjoining oval
- productive garden that could be maintained by students to grow produce for market days and student use.





### Participants asked us to reconsider:

- The appearance of the reception area to give it more personality and make it less clinical
  - round edges of benches
  - reduced/retractable use of safety glass
  - accessible counter height
- Traffic access into and out of the school
  - turning circle at the end of the driveway
  - angled parking
  - kiss 'n' go location.



### Participants asked us to further consider:

- after-school care options (these are being explored by the school)
- fitness rooms
- outdoor shade facilities
- a future café/canteen where students could be taught life skills and gain practical experience
- additional music and performance spaces.

## Next steps

We thank the Verney Road community for their thoughtful feedback and suggestions.

We will carefully consider these ideas in creating the new home for Verney Road School in Shepparton.

## Further information

To stay up to date with the progress of the Verney Road School project, visit

➤ [www.schoolbuildings.vic.gov.au/verney-road-school](http://www.schoolbuildings.vic.gov.au/verney-road-school)

You can contact us:

**Victorian School Building Authority**



1800 896 950



vsba@education.vic.gov.au



/victorianschoolbuild



[www.schoolbuildings.vic.gov.au](http://www.schoolbuildings.vic.gov.au)



For information in your language, please call the Victorian School Building Authority's translation service on 03 9280 0712.